

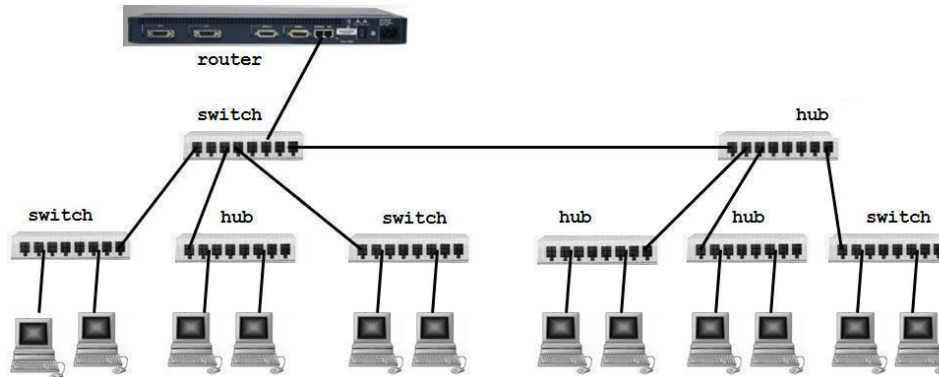
Quiz 6: November 13, 2014

Left Neighbor: \_\_\_\_\_

Right Neighbor: \_\_\_\_\_

This is a closed book quiz

1. (2 points) Circle the collision domains in the picture below



2. (1 points) What does it mean that IP uses best-effort delivery? Answer in one short sentence.
3. (2 points) What does it mean that IP is a connectionless protocol? Answer in one short sentence (an analogy might help).
4. (5 points) You are lucky enough to own the network space denoted by 128.66.0.0 / 19. You decide to break it up into 16 subnets. Give the highest numbered IP address of the subnets you create. (For example, 128.66.0.3 is higher numbered than 128.66.0.1)